









Handwritten text in a cursive script, likely a letter or document, written on the left page of an open book. The text is arranged in approximately 10 horizontal lines, starting from the top right and moving towards the bottom left. The ink is dark, and the paper shows signs of age and wear.

Handwritten text in a cursive script, likely a letter or document, written on the right page of an open book. The text is arranged in approximately 10 horizontal lines, starting from the top right and moving towards the bottom left. The ink is dark, and the paper shows signs of age and wear.







Handwritten text in a cursive script, likely a historical document or manuscript. The text is written in a fluid, connected style. A red line is drawn above the first line of text.

Handwritten text in a cursive script, likely a historical document or manuscript. The text is written in a fluid, connected style. A red line is drawn above the first line of text.

Handwritten text in a cursive script, likely a historical document or manuscript. The text is written in a fluid, connected style. A red line is drawn above the first line of text.







Handwritten text in Arabic script, consisting of approximately 10 lines of cursive script.

Handwritten text in Arabic script, consisting of approximately 10 lines of cursive script.



Handwritten text in cursive script, consisting of approximately 10 lines of text.

Handwritten text in cursive script, consisting of approximately 10 lines of text.

Handwritten text in cursive script, consisting of approximately 10 lines of text.







高人... 病...

高羽の化... 羽...

高... 音...

高... 羽...

高... 羽...

高... 部...

高... 枕...

高... 枕...

高... 枕...

高... 枕...

高... 枕...

高... 枕...

高... 枕...

高... 枕...

高... 枕...

高... 枕...



Handwritten text in a cursive script, likely a historical document or manuscript. The text is written in a dark ink on aged paper. The script is highly stylized and difficult to decipher, but it appears to be a continuous block of text. The word "بسم" (Bismillah) is visible at the beginning of the first line.

Handwritten text in a cursive script, likely a historical document or manuscript. The text is written in a dark ink on aged paper. The script is highly stylized and difficult to decipher, but it appears to be a continuous block of text. The word "بسم" (Bismillah) is visible at the beginning of the first line.



Handwritten text in a cursive script, likely a form of Arabic or Persian calligraphy, consisting of approximately 10 lines of text.

Handwritten text in a cursive script, likely a form of Arabic or Persian calligraphy, consisting of approximately 10 lines of text.



Handwritten text in a cursive script, likely a historical document or manuscript. The text is written in a dark ink on aged paper. It consists of approximately 10 lines of text, with some words appearing to be in a different script or dialect than others. The handwriting is fluid and characteristic of the early modern period.

Handwritten text in a cursive script, likely a historical document or manuscript. The text is written in a dark ink on aged paper. It consists of approximately 10 lines of text, with some words appearing to be in a different script or dialect than others. The handwriting is fluid and characteristic of the early modern period.



Handwritten text in a cursive script, likely a historical document or manuscript. The text is written in a dark ink on aged paper. The script is highly stylized and difficult to decipher. The text is arranged in approximately 10 horizontal lines across the page.

Handwritten text in a cursive script, likely a historical document or manuscript. The text is written in a dark ink on aged paper. The script is highly stylized and difficult to decipher. The text is arranged in approximately 10 horizontal lines across the page.

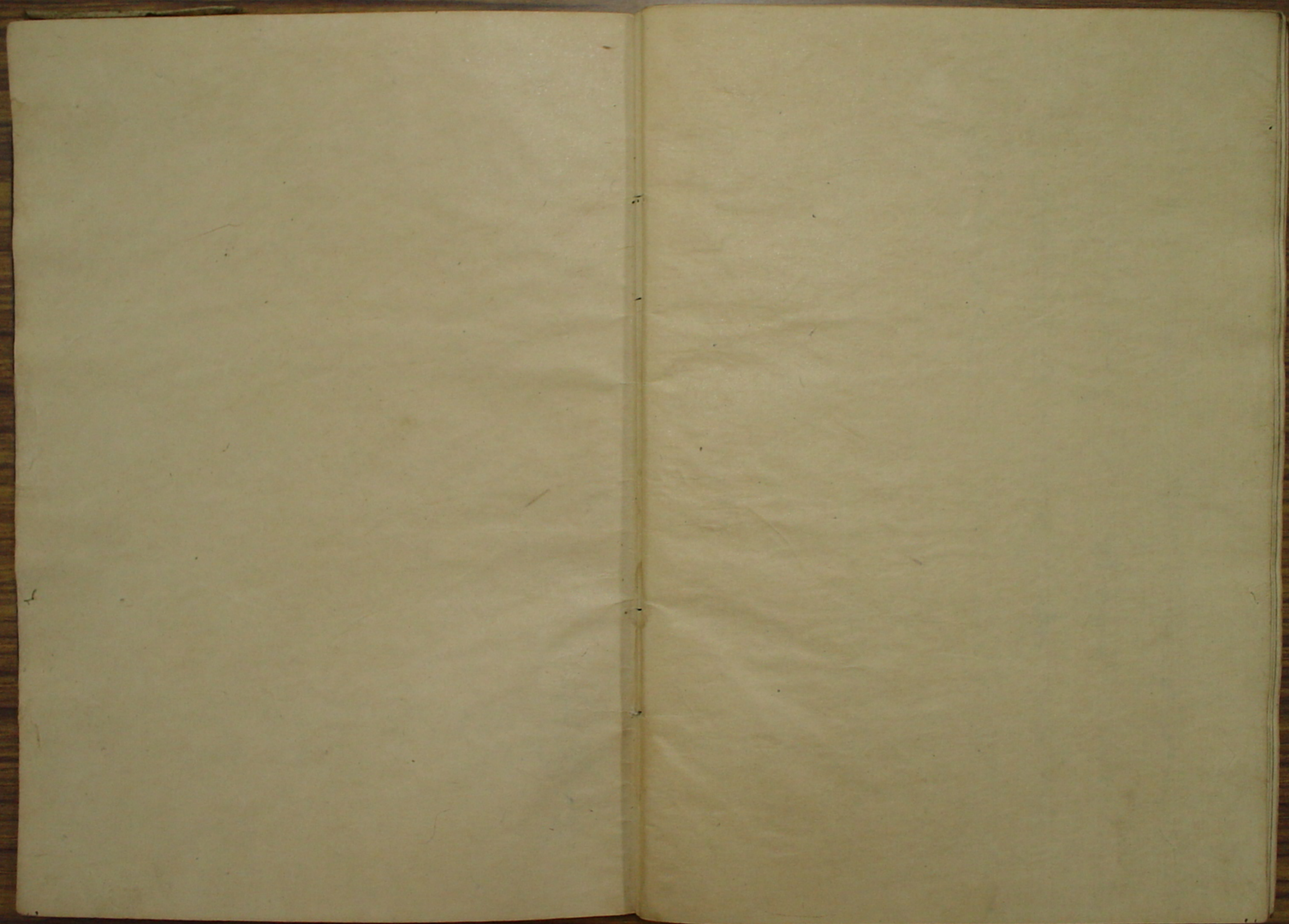














生駒長



